

STH - panno



90



95



91



96



92



97



93



98



94



99

## SMER - Ciniglia



18



23



19



24



20



25



21



27



22



28

SBR - Velluto



01



04



11



03



07



05



12



06



09



14



13



23



10



15



18



24



25



17



22



27

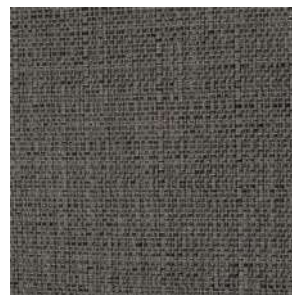
SIV - Canapone tramato



301



320



326



307



302



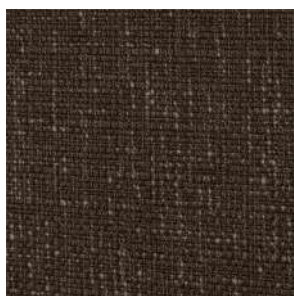
321



327



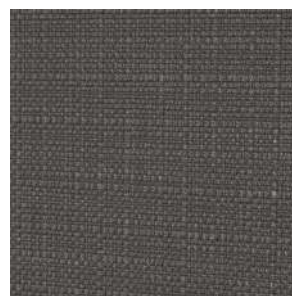
309



303



322



328



312



304



323



329



313



305



324



334



335

SMEL - Canapone tramato



303



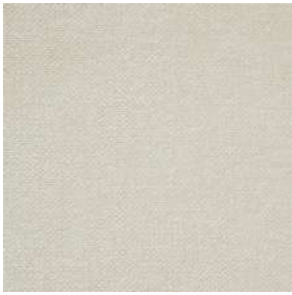
312



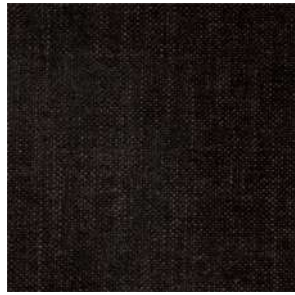
321



332



304



314



325



333



305



316



326



334



306



318



330



337



309



320



331



338

STR - Canapone tramato battuto



42



44



46



51



43



45



47



52



66



49



48



53

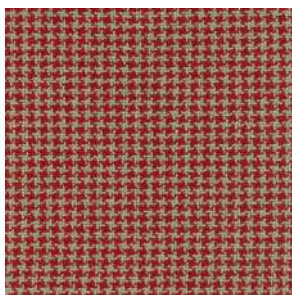


67



68

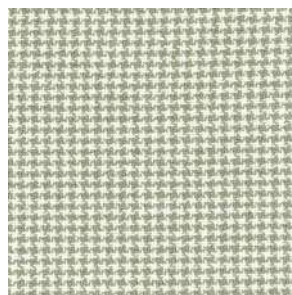
## AMBO - Pied de poule misto lino



2



3



1

## SIMBAD - Jacquard misto lino



1



2



3

BLANCO - Unito misto lana



1



2



3



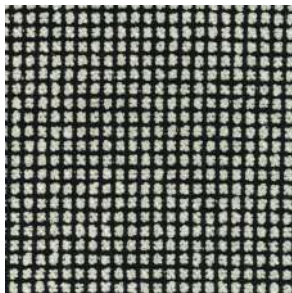
4



5

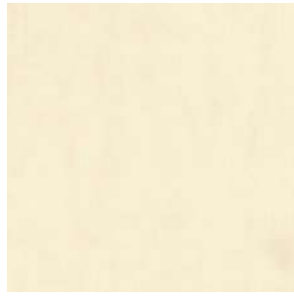


6



7

MINTAKA - Raso cotone-lino



2



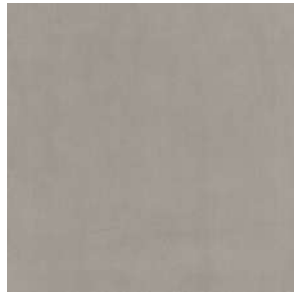
3



4



5



6



7



8



9



10



11



12

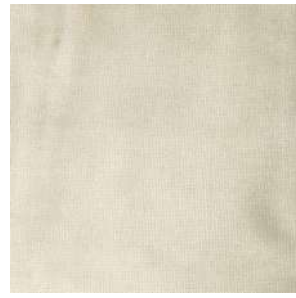
CHERIE—Velluto viscosa-cotone



1



2



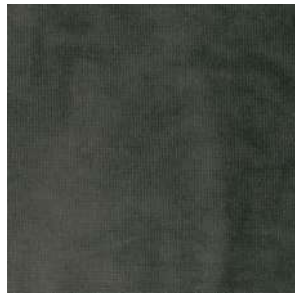
3



4



5



6



7



8



9



10



11



12



13



14



15



16



17



18

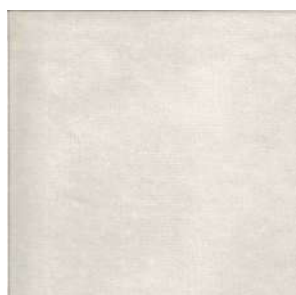


19



20

AMAR - Velluto cotone-viscosa



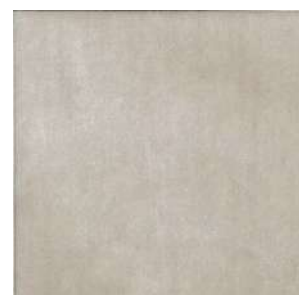
1



2



3



4



5



6



7



8



9



10



11



12



13



14



15



16



17



18

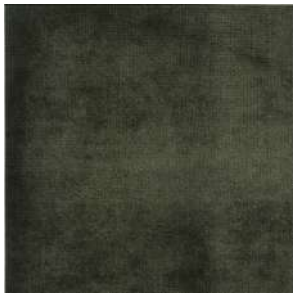


19

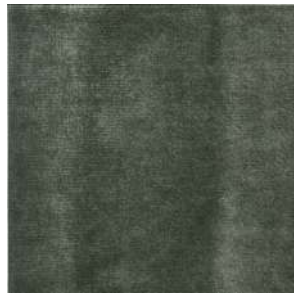


20

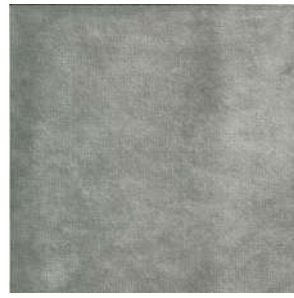
AMAR - Velluto cotone-viscosa



21



22



23



24



25



26



27

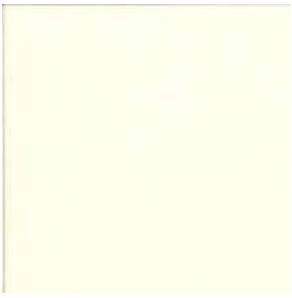


28

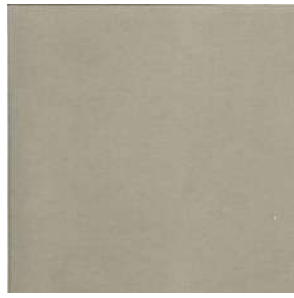


29

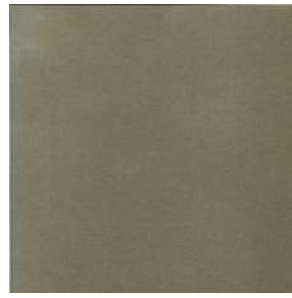
LORD JIM - Velluto cotone



1



2



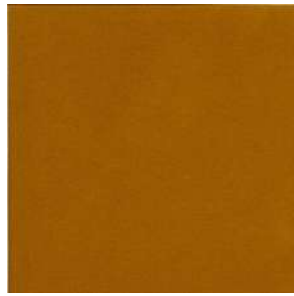
3



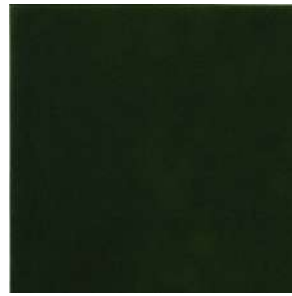
4



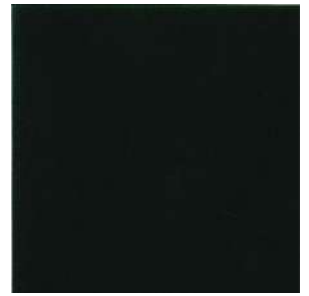
5



6



7



9



10



11



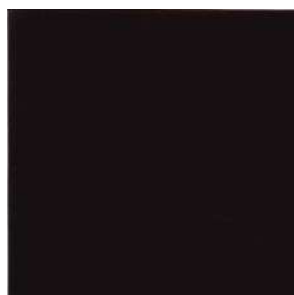
12



13



14



15



17



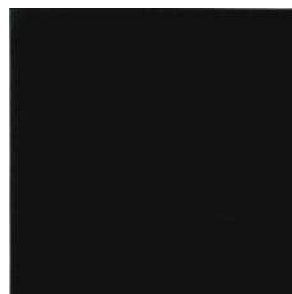
19



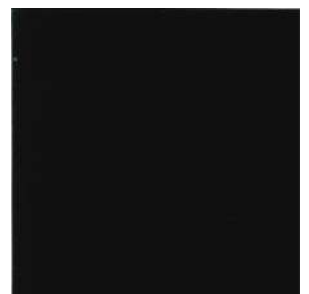
20



22



23

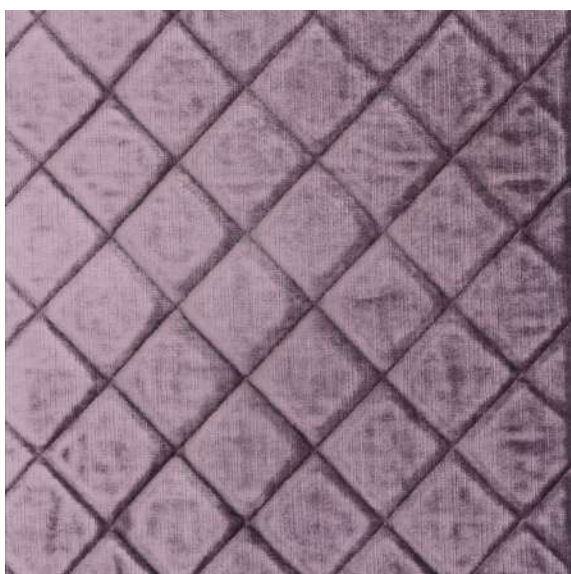


24

## NORMANDIE - Velluto cotone-viscosa



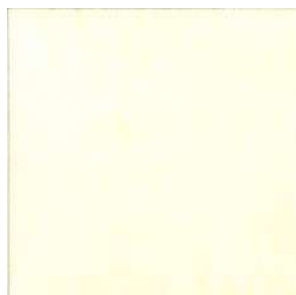
29



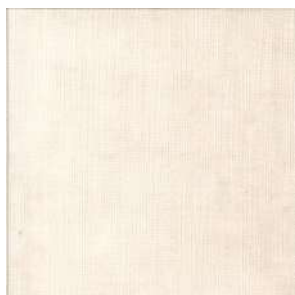
29 C

Disponibile nella versione standard o trapuntato capitonnè

NORMANDIE - Velluto cotone-viscosa



1



2



3



4



6



7



8



10



11



12



13



14



17



19



20



21



22



24



25



26

NORMANDIE - Velluto cotone-viscosa



27



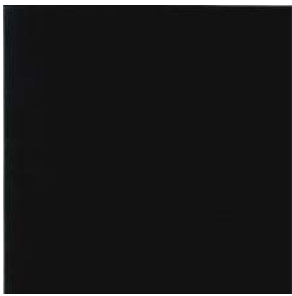
28



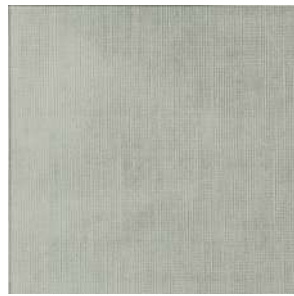
29



30



31



32



33



34



36



38



39



40



41



42